

# For Lease

# 1802 Brightseat Road, Landover, MD



## Property Features

- Approximately 9,181 Square Feet per Floor
- 1<sup>st</sup> and 2<sup>nd</sup> Full Floors Available
- Floors can be Demised
- Ceiling Height of 9 Foot on First Floor With Optional Private Entry
- Convenient Access to Metro Bus and Metro Rail (Blue and Orange Lines)



- Less Than ½ Mile to Washington, D.C. and FedEx Field (Home of the Redskins)
- Ideally Located in Central Prince George's County, Just off of the Washington Beltway (I-95/I-495)
- **LEASE RATE:**  
**\$19.50 to \$20.75**  
**Per Square Foot**

*For More Information,  
Please Contact*

**NAMichael**  
COMMERCIAL REAL ESTATE SERVICES WORLDWIDE

Jeffrey D. Ludwig  
301-918-2923

[jludwig@naimichael.com](mailto:jludwig@naimichael.com)

Joe Palermo  
301-918-2916

[jpalermo@naimichael.com](mailto:jpalermo@naimichael.com)

4640 Forbes Boulevard, Suite 300 ♦ Lanham, Maryland 20706 ♦ 301-459-4400/800-524-4862 ♦ Fax: 301-459-1533 ♦ [www.naimichael.com](http://www.naimichael.com)

Graphic representations of this property have been reduced and reproduced, and are not necessarily to scale. The information contained herein was obtained from sources deemed reliable; however, we make no representation as to its accuracy or completeness.

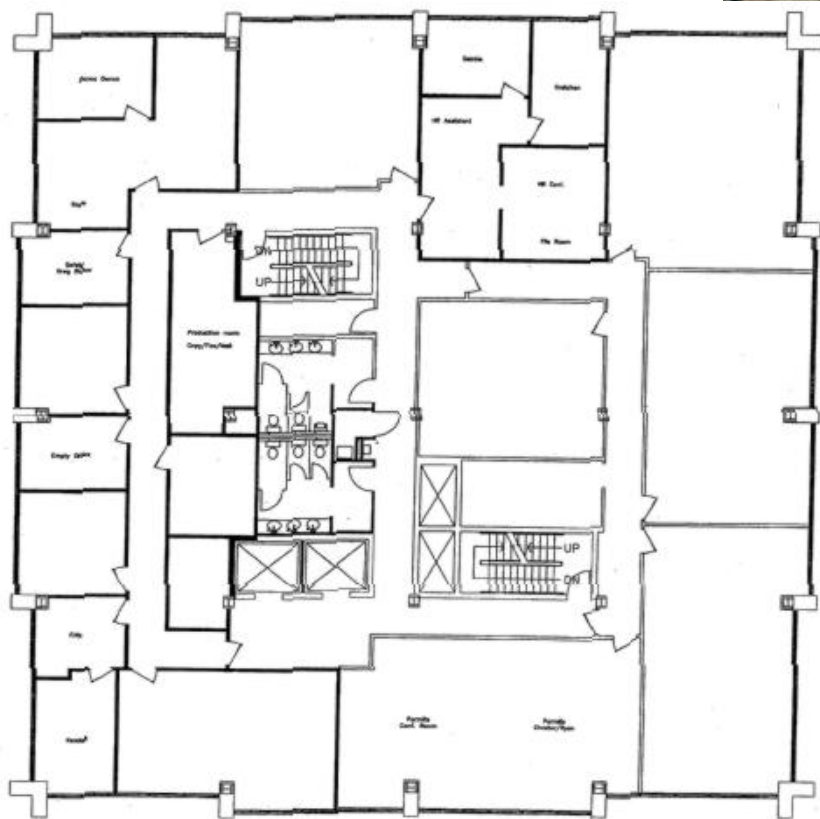
# For Lease

1802 Brightseat Road  
Landover, MD

- Convenient to the Boulevard at the Cap Center With Restaurants Such as:



- Along With Numerous Retail Amenities



**For More Information,  
Please Contact:**

**Jeffrey D. Ludwig**  
301-918-2923

[jludwig@naimichael.com](mailto:jludwig@naimichael.com)

**Joseph Palermo**

301-918-2916

[jpalamero@naimichael.com](mailto:jpalamero@naimichael.com)

**Naimichael**  
COMMERCIAL REAL ESTATE SERVICES WORLDWIDE

4640 Forbes Boulevard, Suite 300 ♦ Lanham, Maryland 20706 ♦ 301-459-4400/800-524-4862 ♦ Fax: 301-459-1533 ♦ [www.naimichael.com](http://www.naimichael.com)

Graphic representations of this property have been reduced and reproduced, and are not necessarily to scale. The information contained herein was obtained from sources deemed reliable; however, we make no representation as to its accuracy or completeness.