

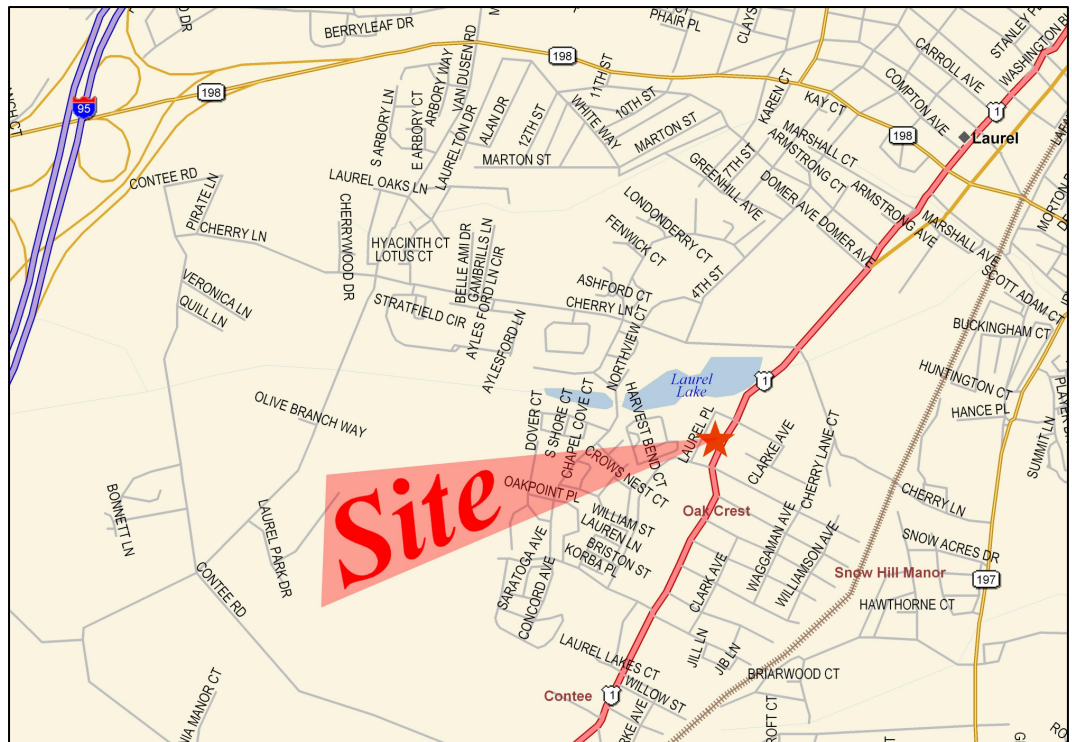
For Lease

14405 Laurel Place, Laurel, Maryland



Property Features:

- 3-Story Class "A" Building
- Spaces From 846 to 7,930 Square Feet
- Rt. 1 Frontage
- Customized High-end Buildouts
- Convenient to Shopping and Restaurants
- Easy Access to 195, BW Parkway And Less Than 1 Mile From The Under Construction I.C.C.



➤ RENTAL RATE: Market Rate

For More Information, Please Contact



Commercial Real Estate Services, Worldwide.

Allen Cornell
301-918-2909

acornell@naimichael.com

Joe Palermo
301-918-2916

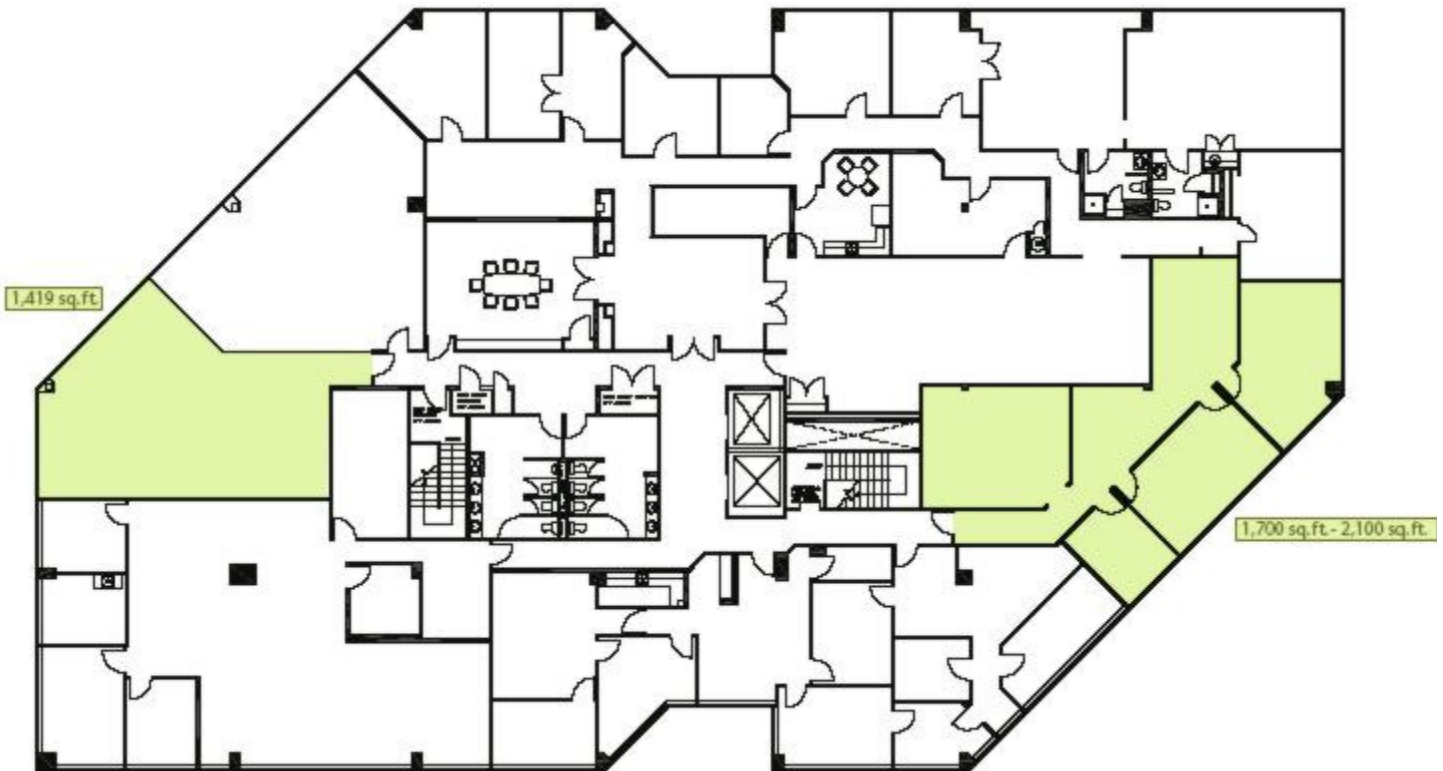
jpalermo@naimichael.com

10100 Business Parkway ♦ Lanham, Maryland 20706 ♦ 301-459-4400/800-524-4862 ♦ Fax: 301-459-1533 ♦ www.naimichael.com

Graphic representations of this property have been reduced and reproduced, and are not necessarily to scale. The information contained herein was obtained from sources deemed reliable; however, we make no representation as to its accuracy or completeness.

For Lease

14405 Laurel Place, Laurel, Maryland



NAI Michael

Commercial Real Estate Services, Worldwide.

For More Information, Please Contact

Allen Cornell
301-918-2909

Joe Palermo
301-918-2916

acornell@naimichael.com jpalermo@naimichael.com

10100 Business Parkway ♦ Lanham, Maryland 20706 ♦ 301-459-4400/800-524-4862 ♦ Fax: 301-459-1533 ♦ www.naimichael.com

Graphic representations of this property have been reduced and reproduced, and are not necessarily to scale. The information contained herein was obtained from sources deemed reliable; however, we make no representation as to its accuracy or completeness.